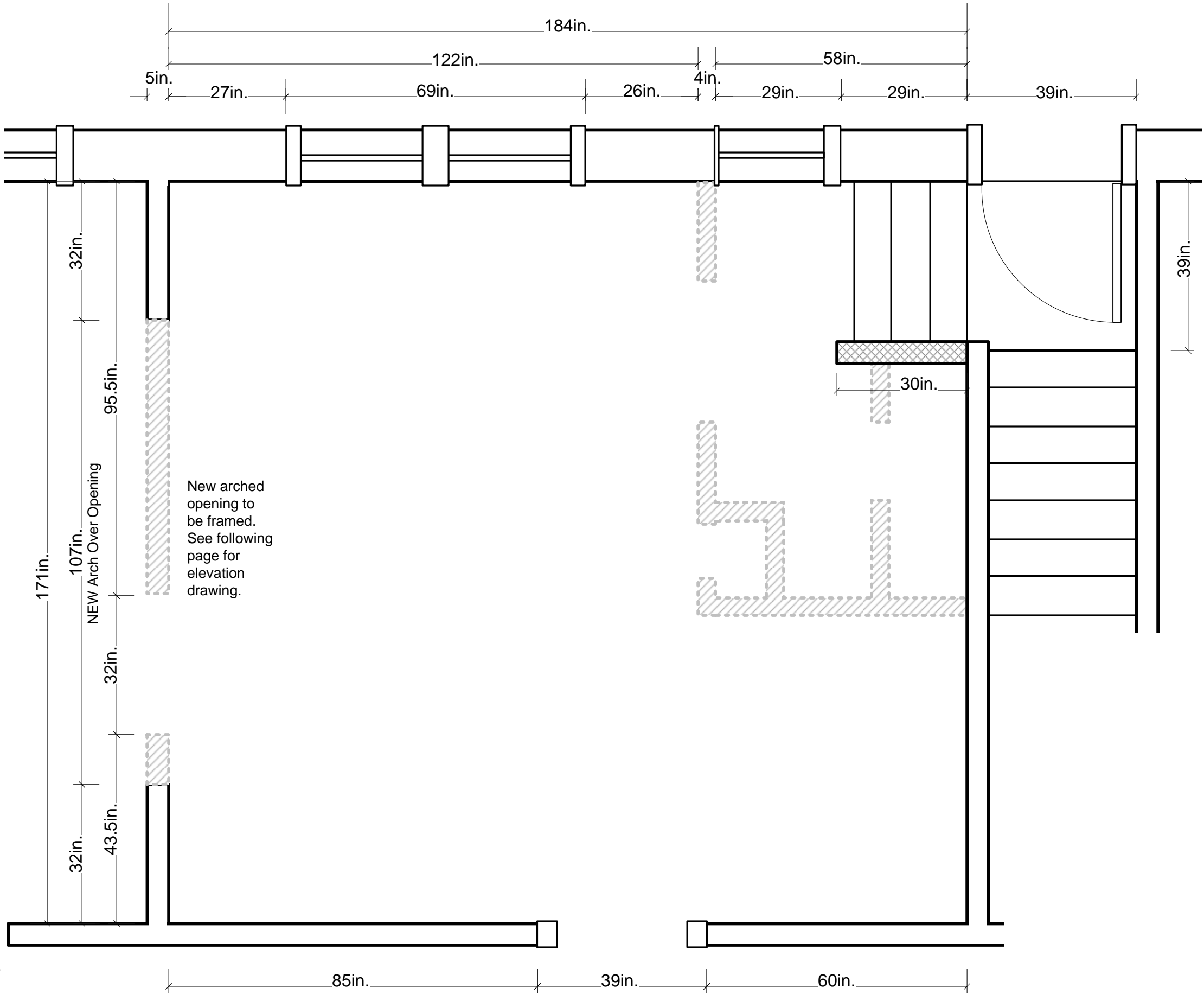




KITCHEN REMODEL

Design Drawings by
Beth Niemand
Niemand Interiors
Chicago, IL
www.niemandinteriors.com
312-498-5838

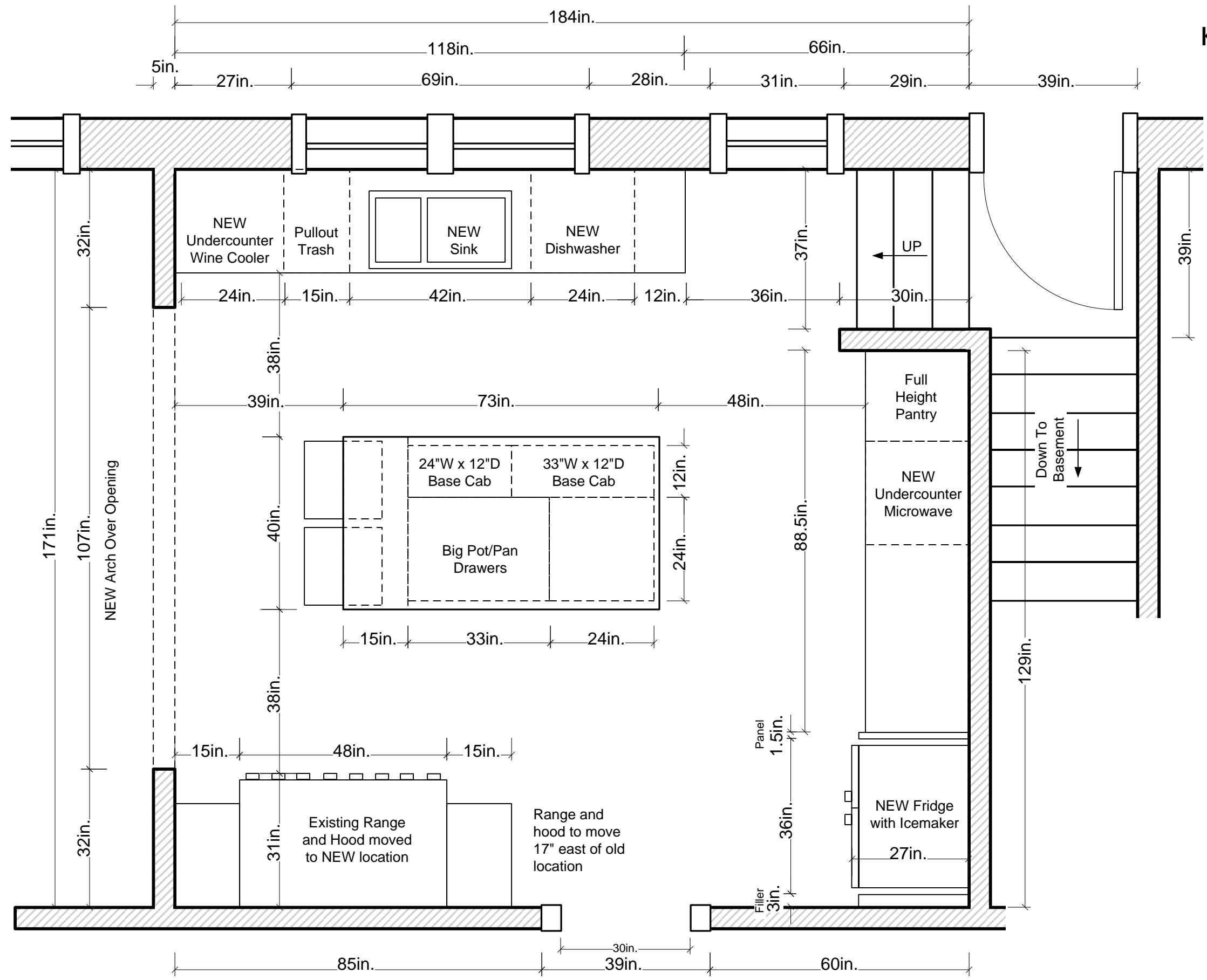
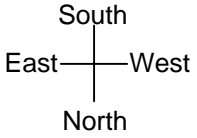
Kitchen Remodel Demolition and Framing Plan



- All existing exterior and interior walls to remain as existing are shown with no fill and a black outline. □
- All existing interior walls to be demolished are shown with a shaded gray dashed outline. ▨
- New walls to be framed are shown with black crosshatch fill. ▩
- Walls consist of 2x4 framing with new 5/8" gypsum wallboard.
- Finished ceiling height with new 5/8" gypsum wallboard is 8'-6".

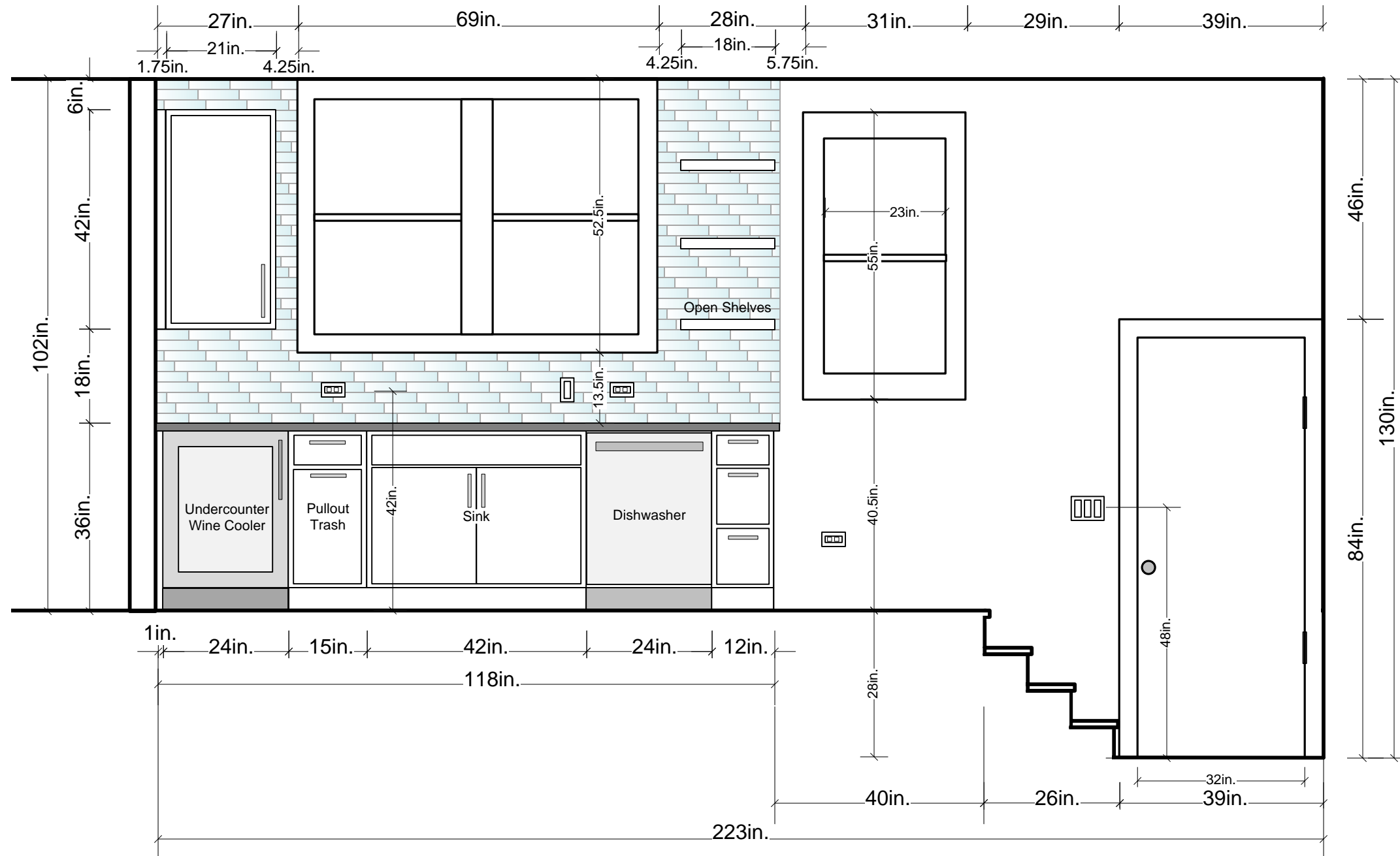
Design Drawings by
Beth Niemand
Niemand Interiors
Chicago, IL
www.niemandinteriors.com

Kitchen Remodel NEW Floor Plan



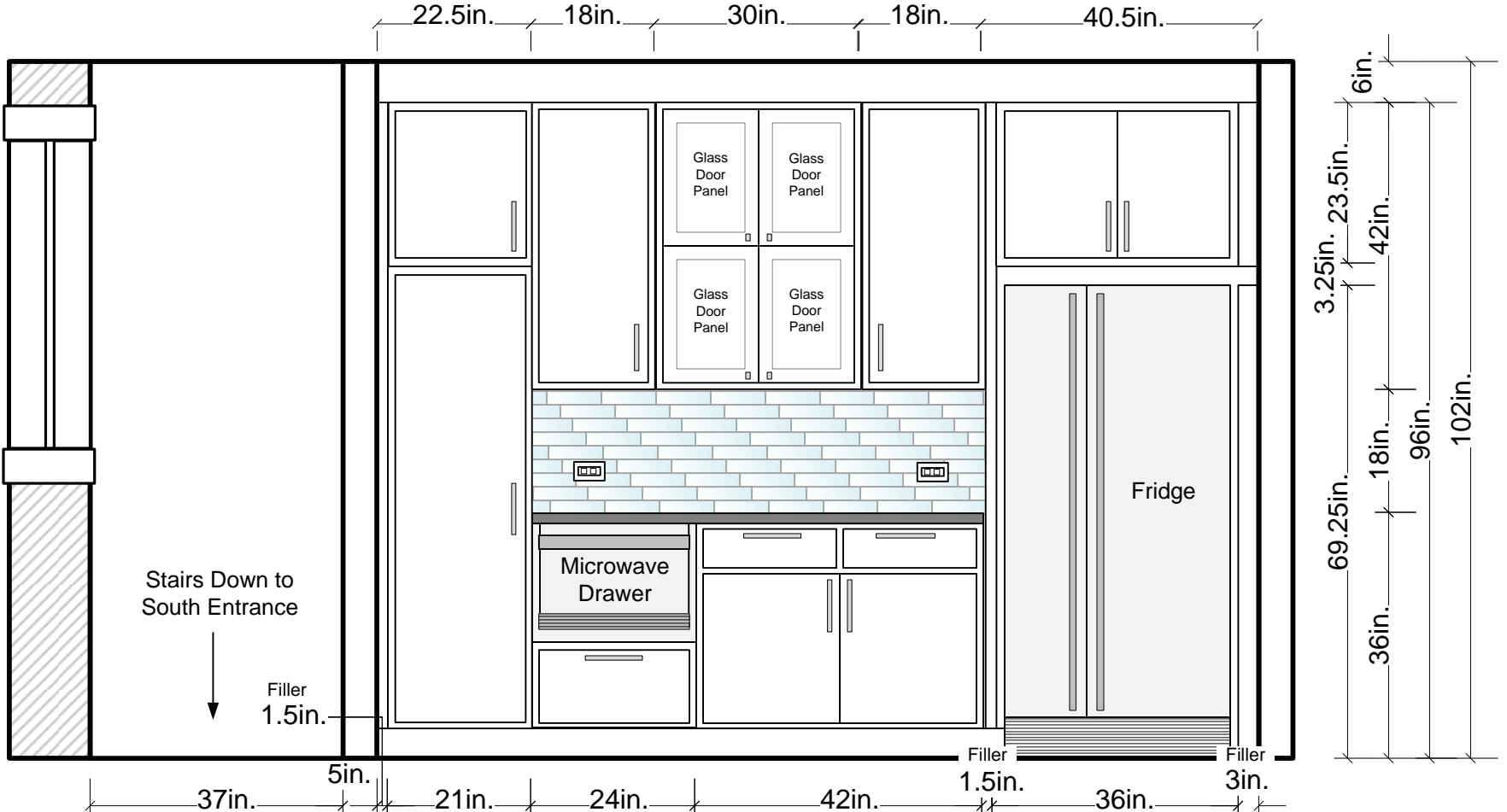
Design Drawings by
Beth Niemand
Niemand Interiors
Chicago, IL
www.niemandinteriors.com

Kitchen Remodel South Elevation

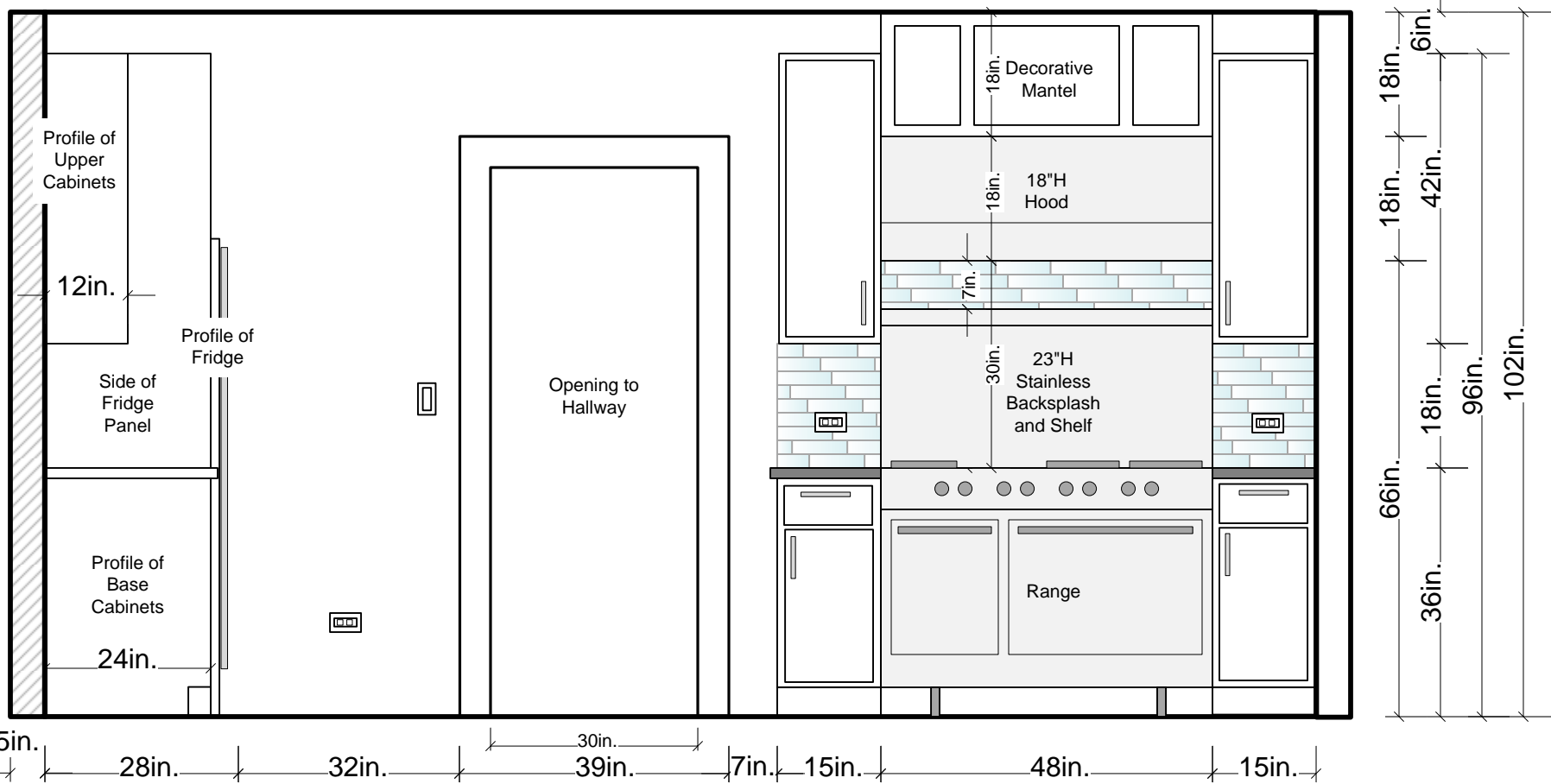


Design Drawings by
Beth Niemand
Niemand Interiors
Chicago, IL
www.niemandinteriors.com

Kitchen Remodel



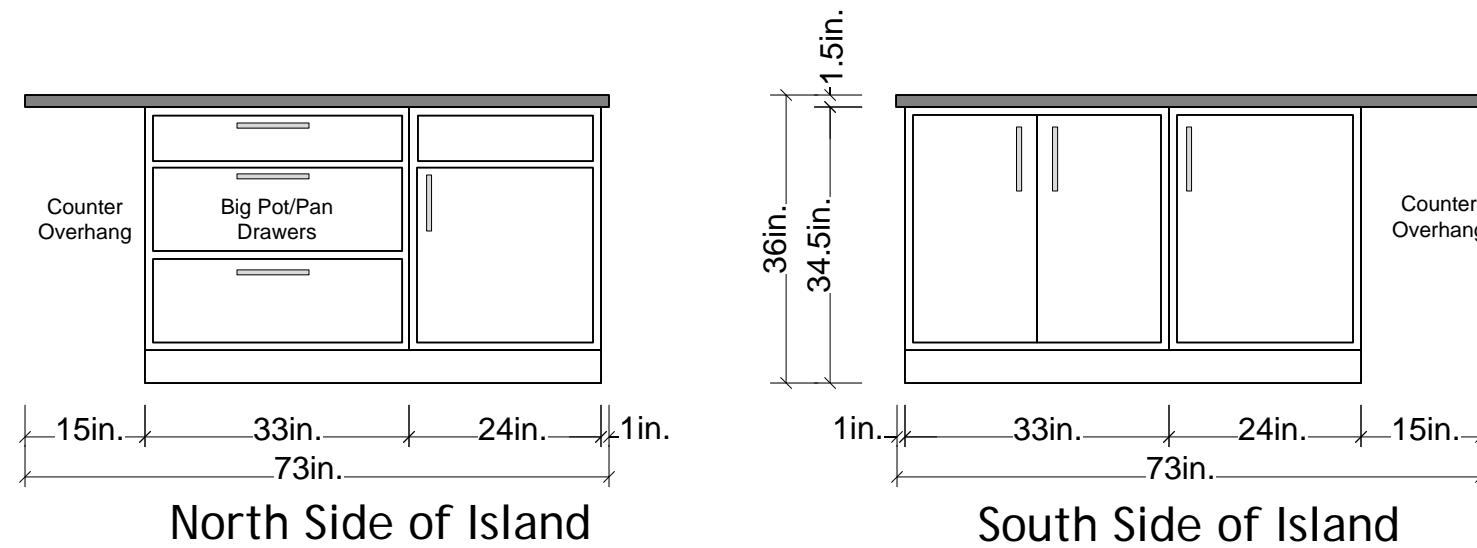
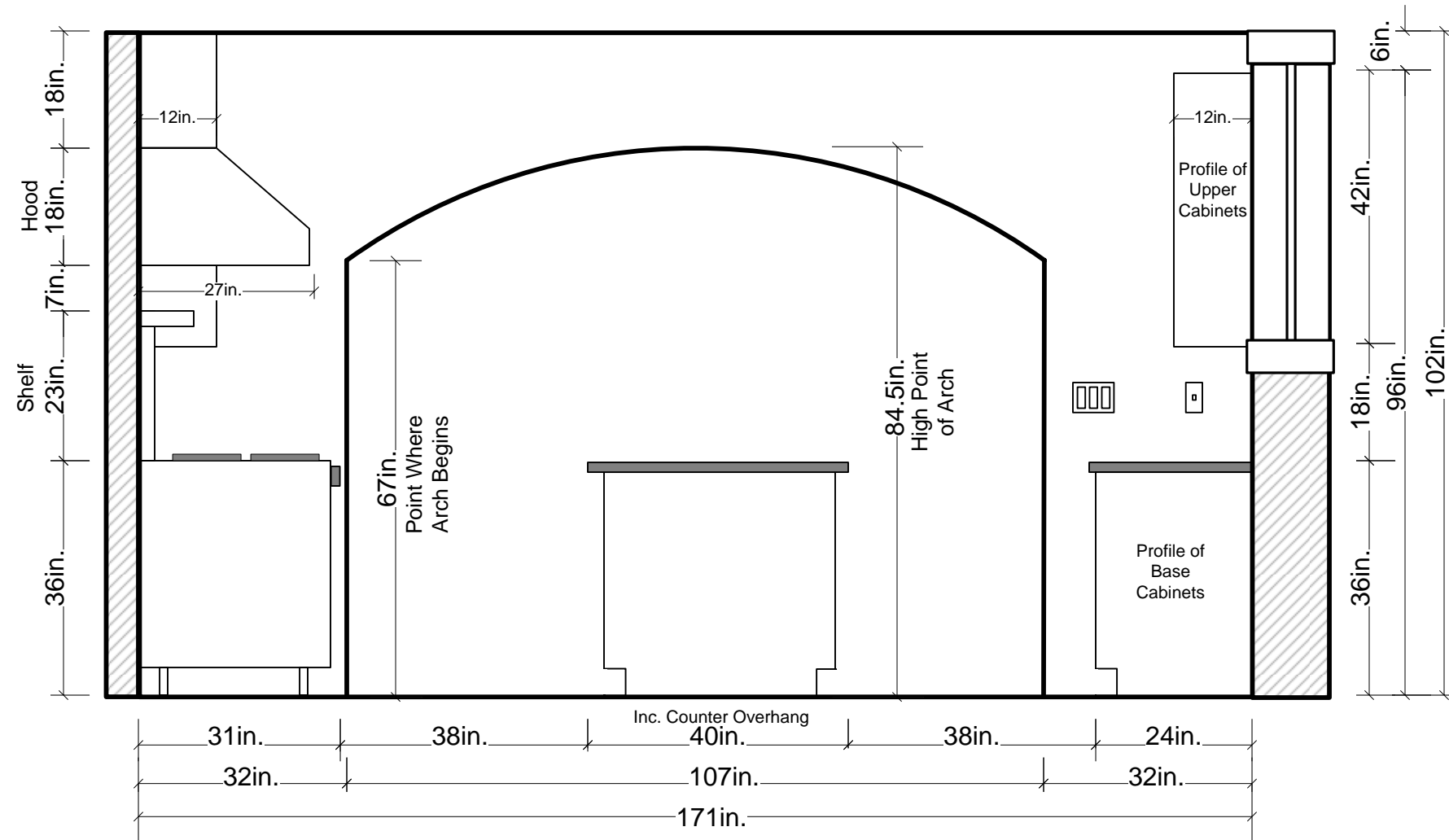
West Elevation



North Elevation

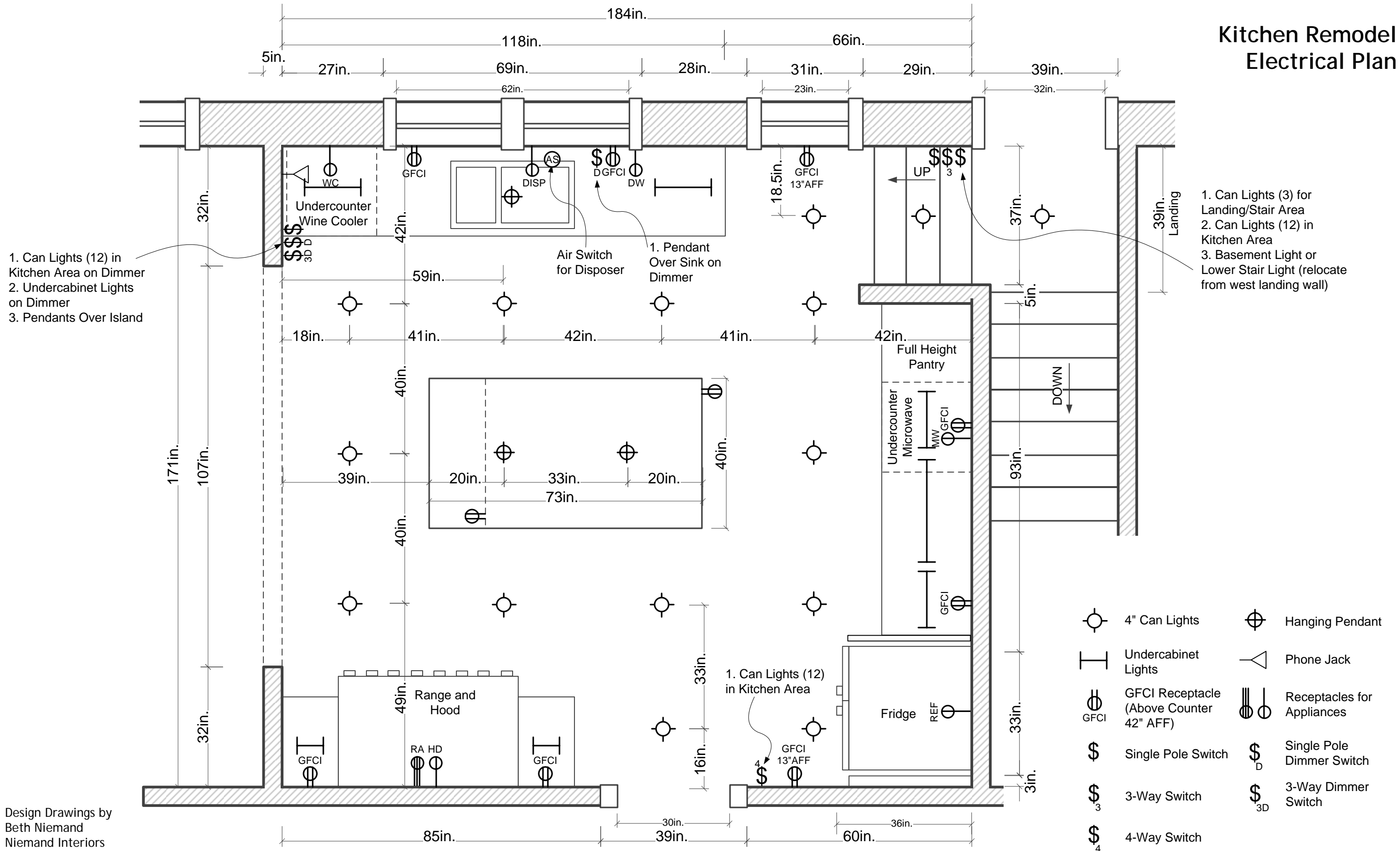
Design Drawings by
 Beth Niemand
 Niemand Interiors
 Chicago, IL
 www.niemandinteriors.com

Kitchen Remodel



Design Drawings by
 Beth Niemand
 Niemand Interiors
 Chicago, IL
 www.niemandinteriors.com

Kitchen Remodel Electrical Plan



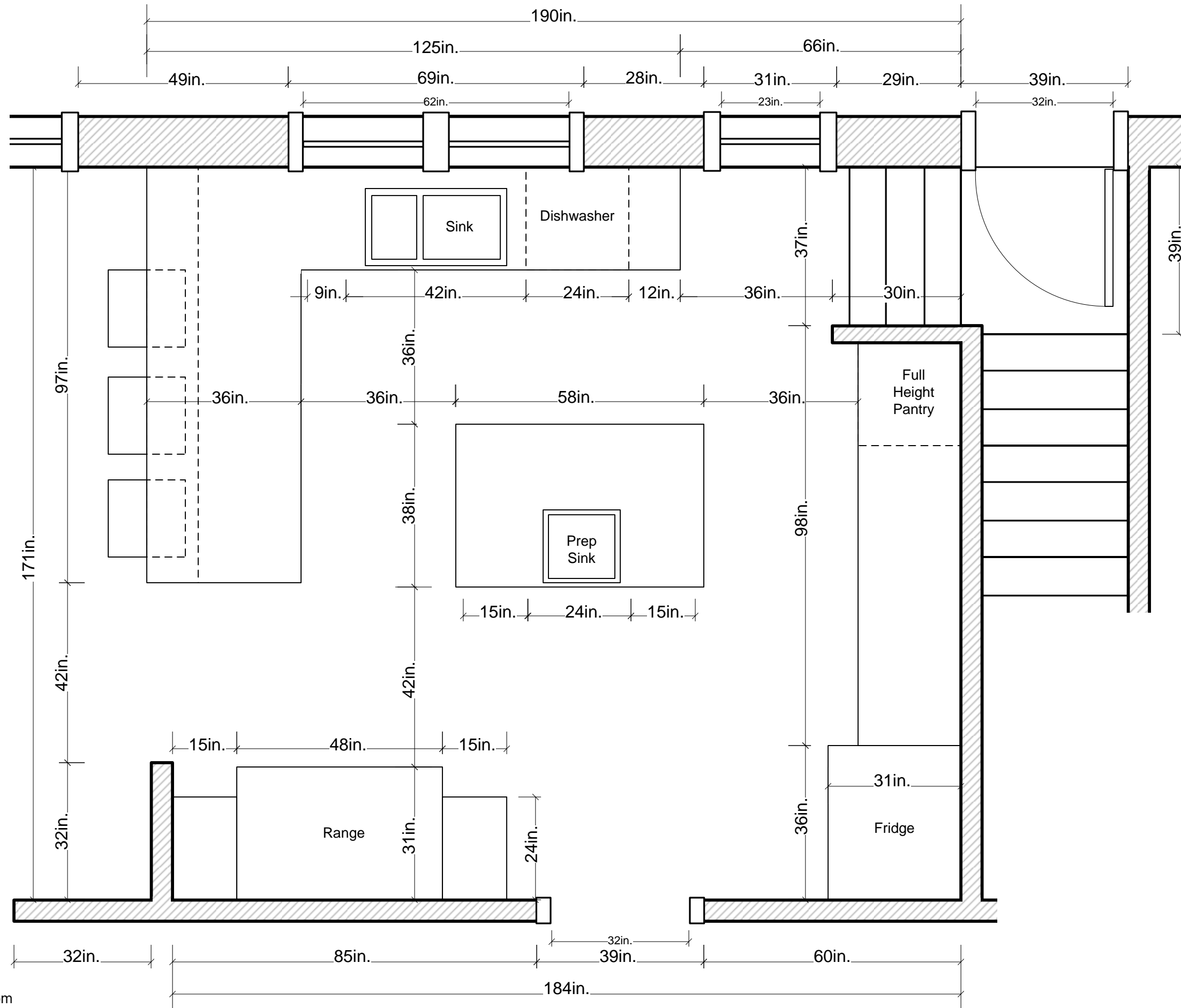
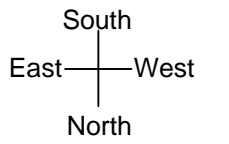
Design Drawings by
 Beth Niemand
 Niemand Interiors
 Chicago, IL
 www.niemandinteriors.com



Alternate Floor Plans

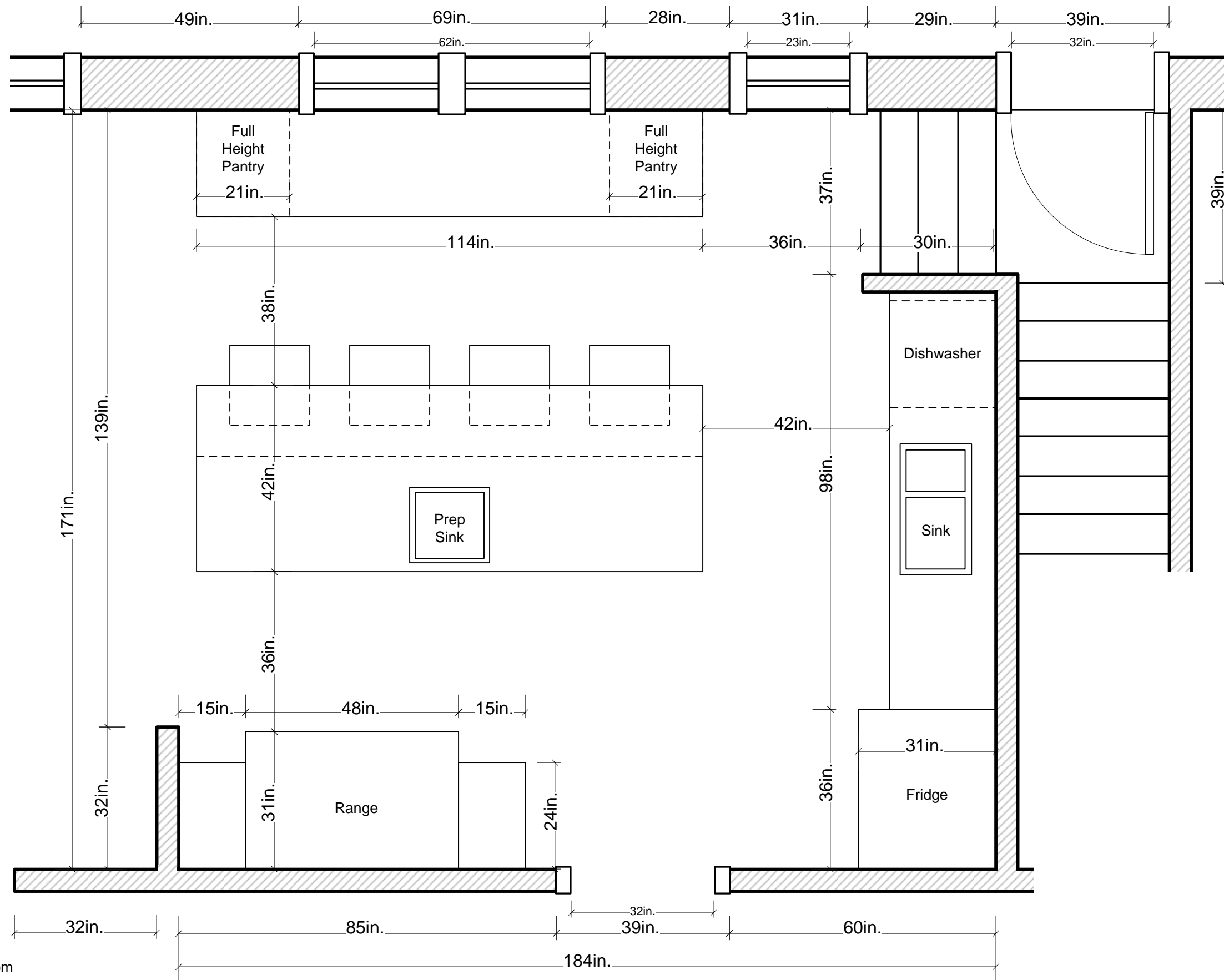
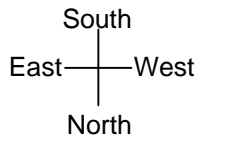
The following pages show alternate floor plan designs proposed for this project

Kitchen Remodel Floor Plan Option 2



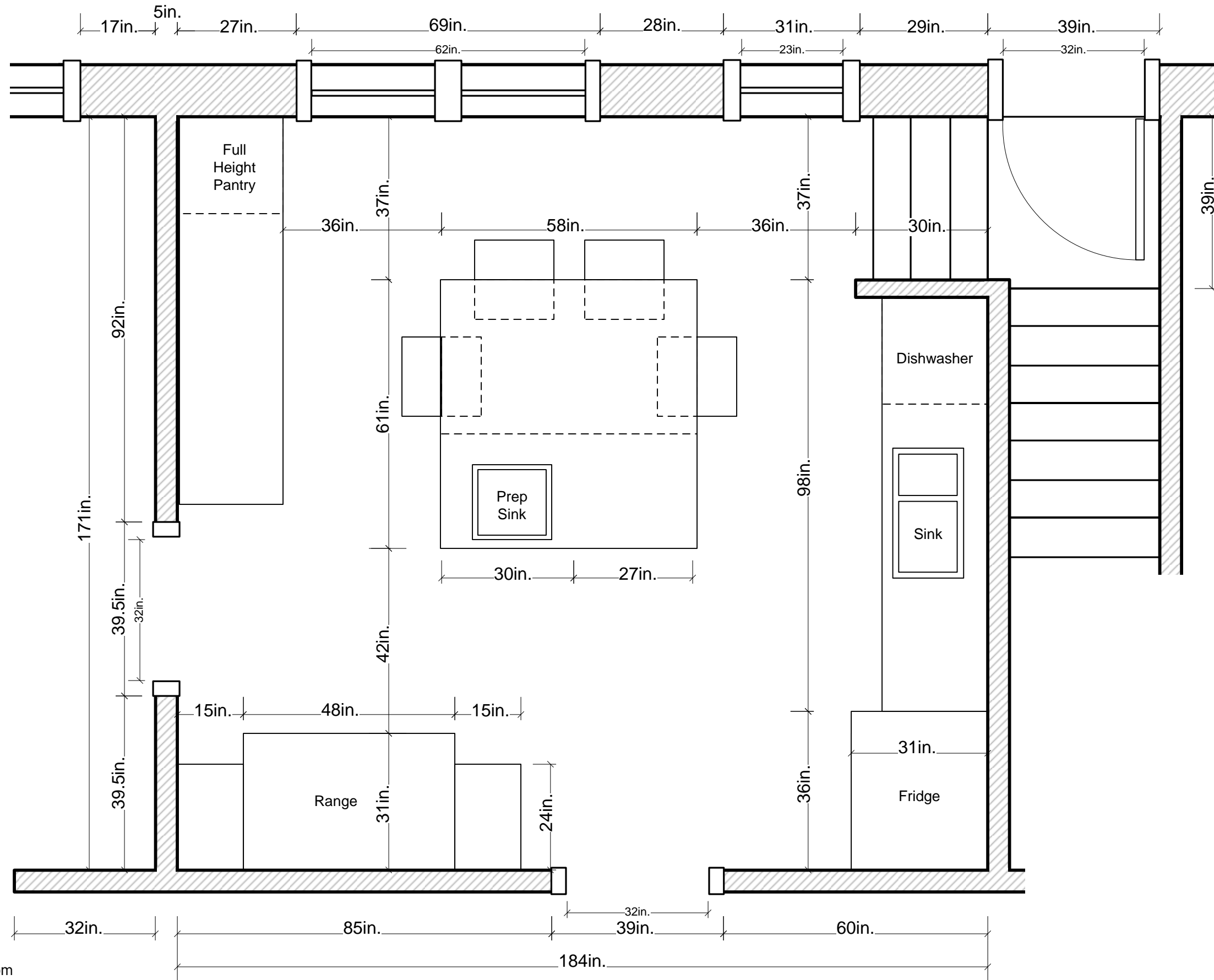
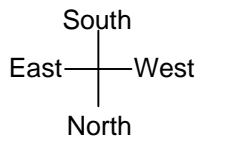
Design Drawings by
 Beth Niemand
 Niemand Interiors
 Chicago, IL
www.niemandinteriors.com

Kitchen Remodel Floor Plan Option 3



Design Drawings by
Beth Niemand
Niemand Interiors
Chicago, IL
www.niemandinteriors.com

Kitchen Remodel Floor Plan Option 4



Design Drawings by
Beth Niemand
Niemand Interiors
Chicago, IL
www.niemandinteriors.com