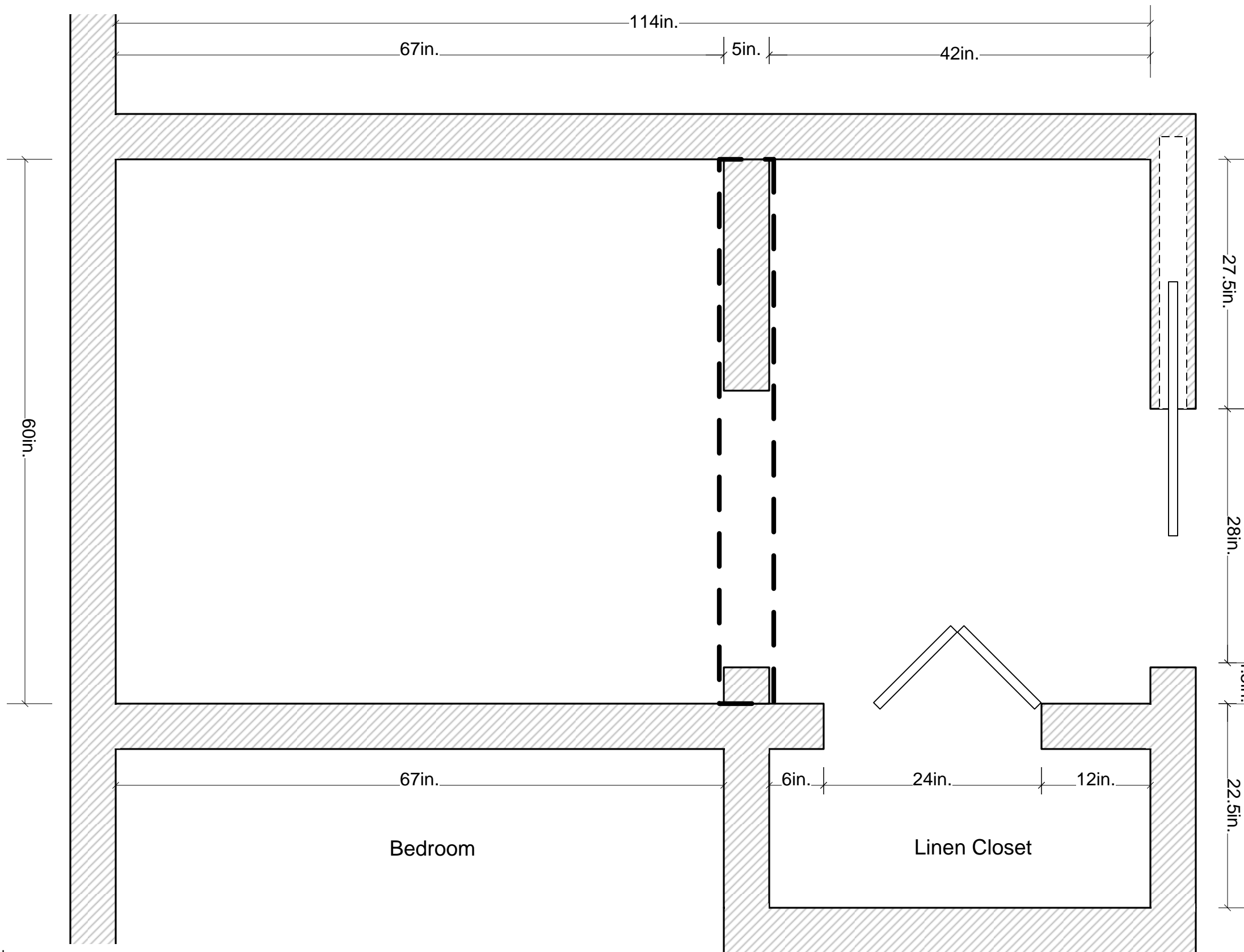
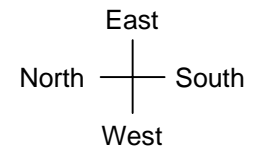




BATH REMODEL

Design Drawings by
Beth Niemand
Niemand Interiors
Chicago, IL
312-498-5838
www.niemandinteriors.com

Demolition and Framing Plan Bath Remodel



Remove tub, toilet, sink, vanity and all plumbing fixtures.

Remove wall between sink and toilet, outlined with heavy dashed line.

Remove door between sink and toilet.

Remove linen closet door and shelving.

Prepare south wall for pocket door to bath entry.

Prepare west wall for bifold door to linen closet.

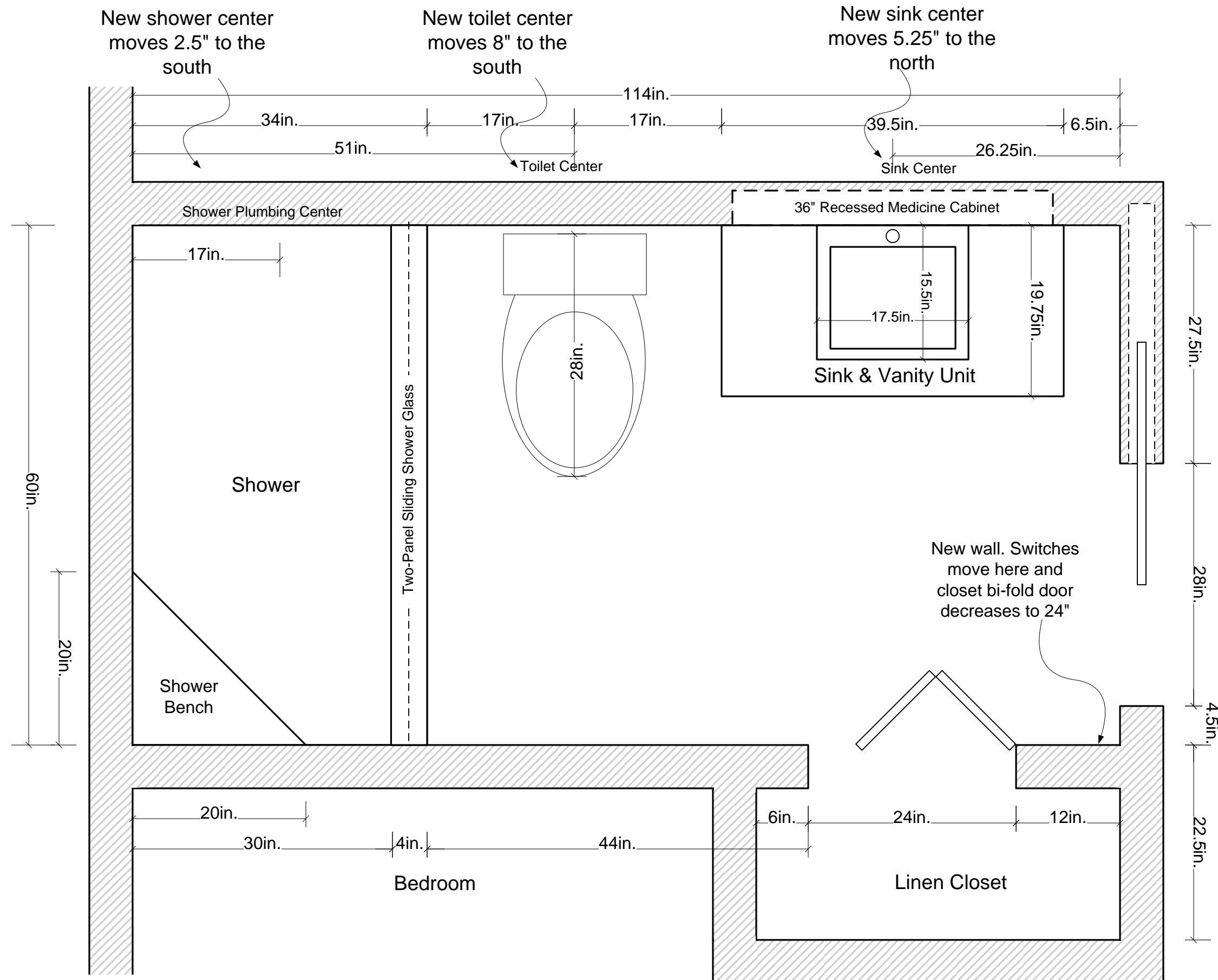
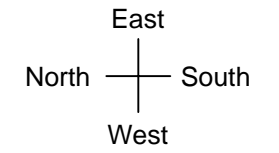
Ceiling over tub and toilet to be raised to 96" high.

Frame in over sink/vanity and linen closet to create a ceiling with finished height of 96" – same as tub and toilet area.

SEE PAGE 3 FOR NEW FLOOR PLAN

Design Drawings by
Beth Niemand
Niemand Interiors
Chicago, IL
Cell 312-498-5838

NEW Floor Plan Bath Remodel

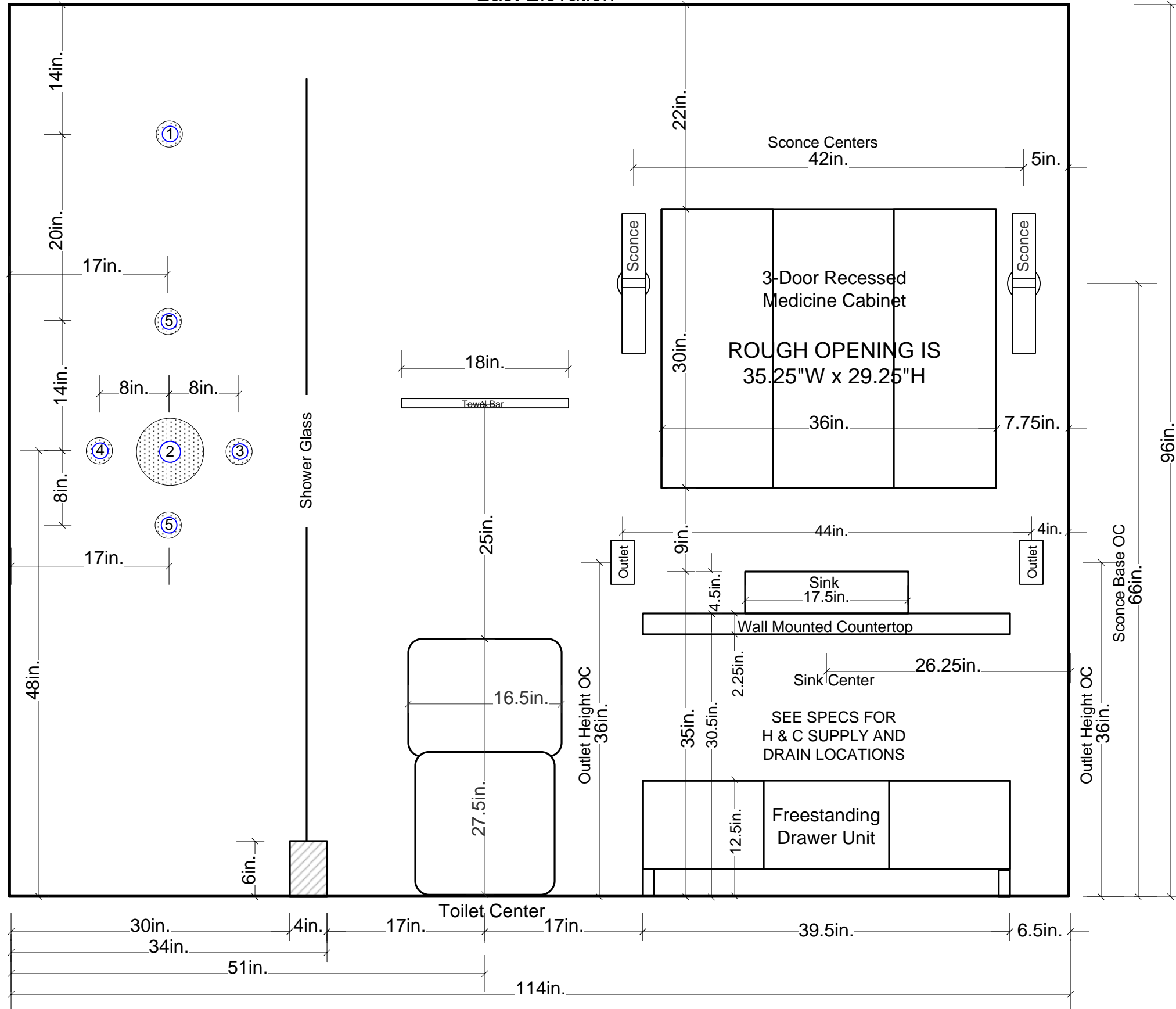


Design Drawings by
Beth Niemand
Niemand Interiors
Chicago, IL
Cell 312-498-5838

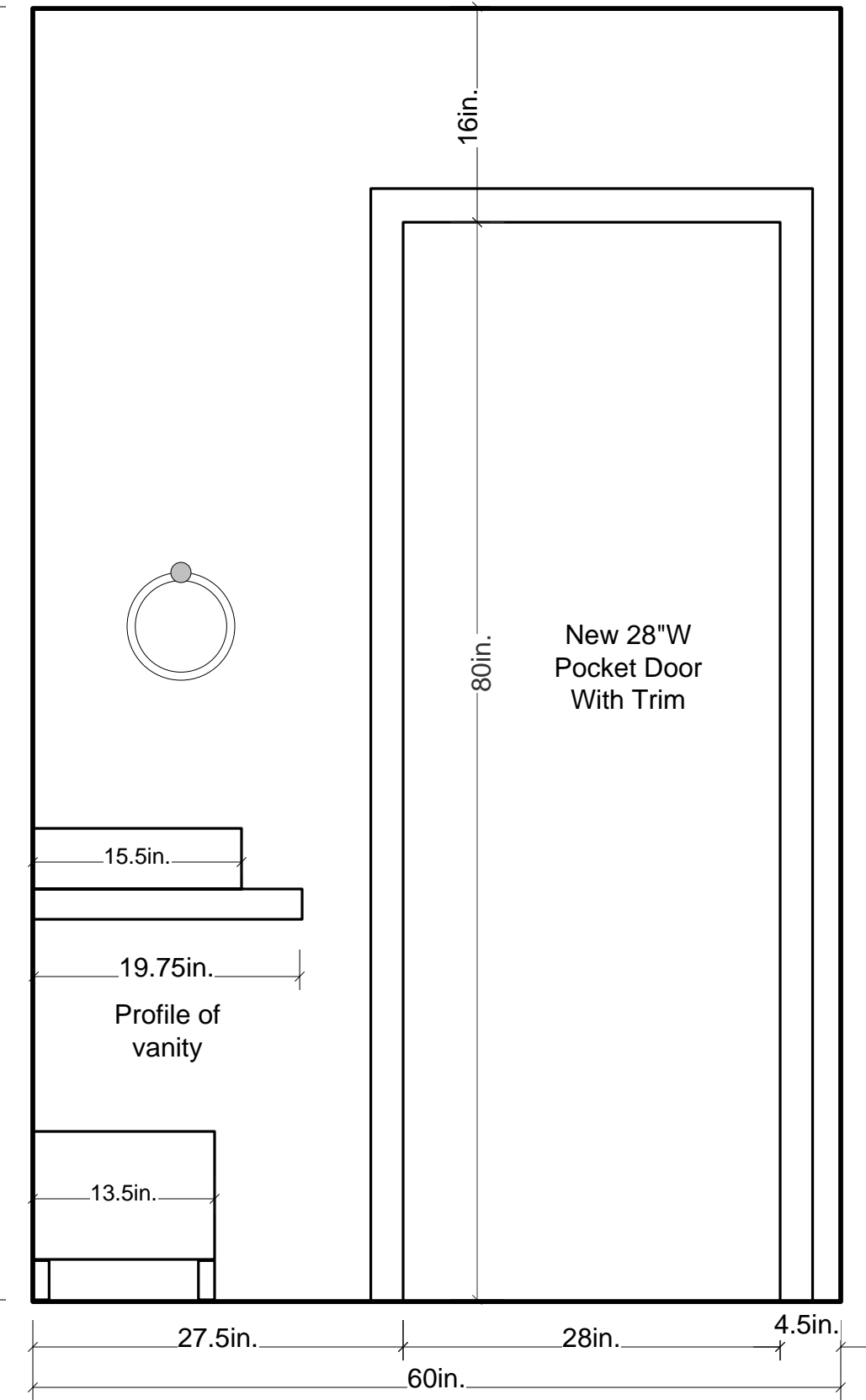
Plumbing Fixtures:
 1. Shower head
 2. Thermostatic valve
 3. Volume control for shower head
 4. Volume control for body sprays
 5. Body sprays

East and South Elevations Bath Remodel

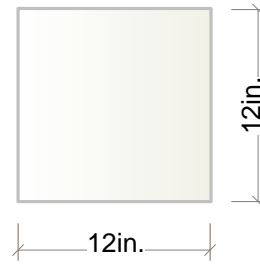
East Elevation



South Elevation



Bath Floor



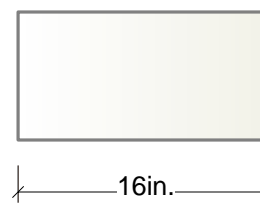
Seville Classic
Natural Stone
12 x 12
Use on bath floor in
diamond pattern

Shower Floor



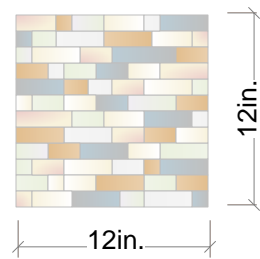
Seville Chateau
(Tumbled) Natural
Stone 4x4
Use on shower floor
in grid pattern

Bath and Shower Walls



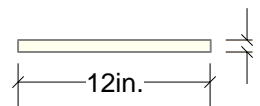
Seville Classic
Natural Stone
8 x 16

- Use on shower and bath walls in offset pattern
- Cut to fit shower threshold
- Cut to 6x16 for base trim on walls without wall tile



Mosaic Blend
Netted on 12 x 12
Use 18 rows (approx 18"H)
for horizontal border around
shower and vanity wall

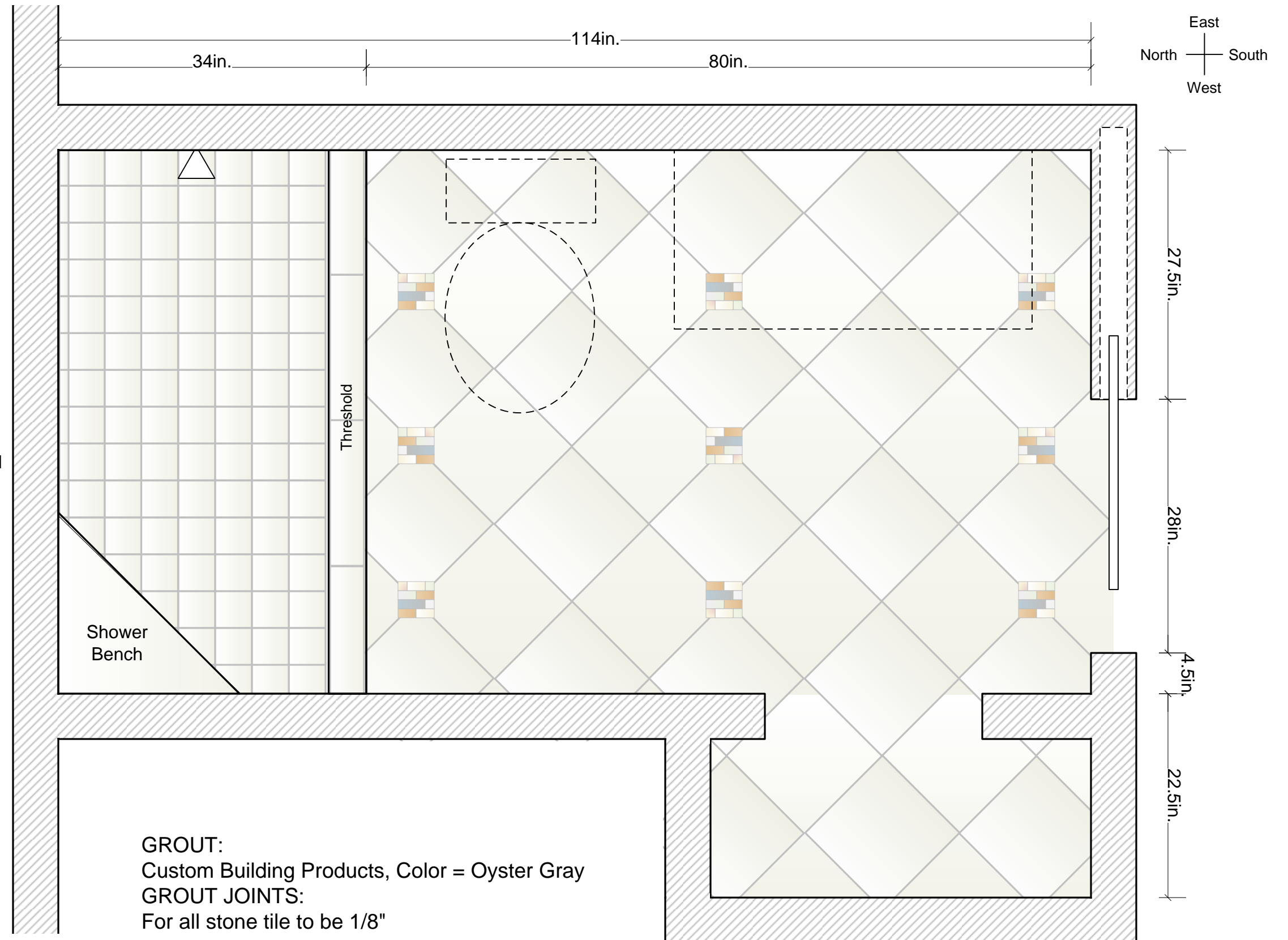
4" squares to be used
as insets on floor



Seville Classic
Natural Stone
3/4" x 12" Soho Molding #742
Use along edge of east shower
wall and along edge of wall to
the right of the vanity

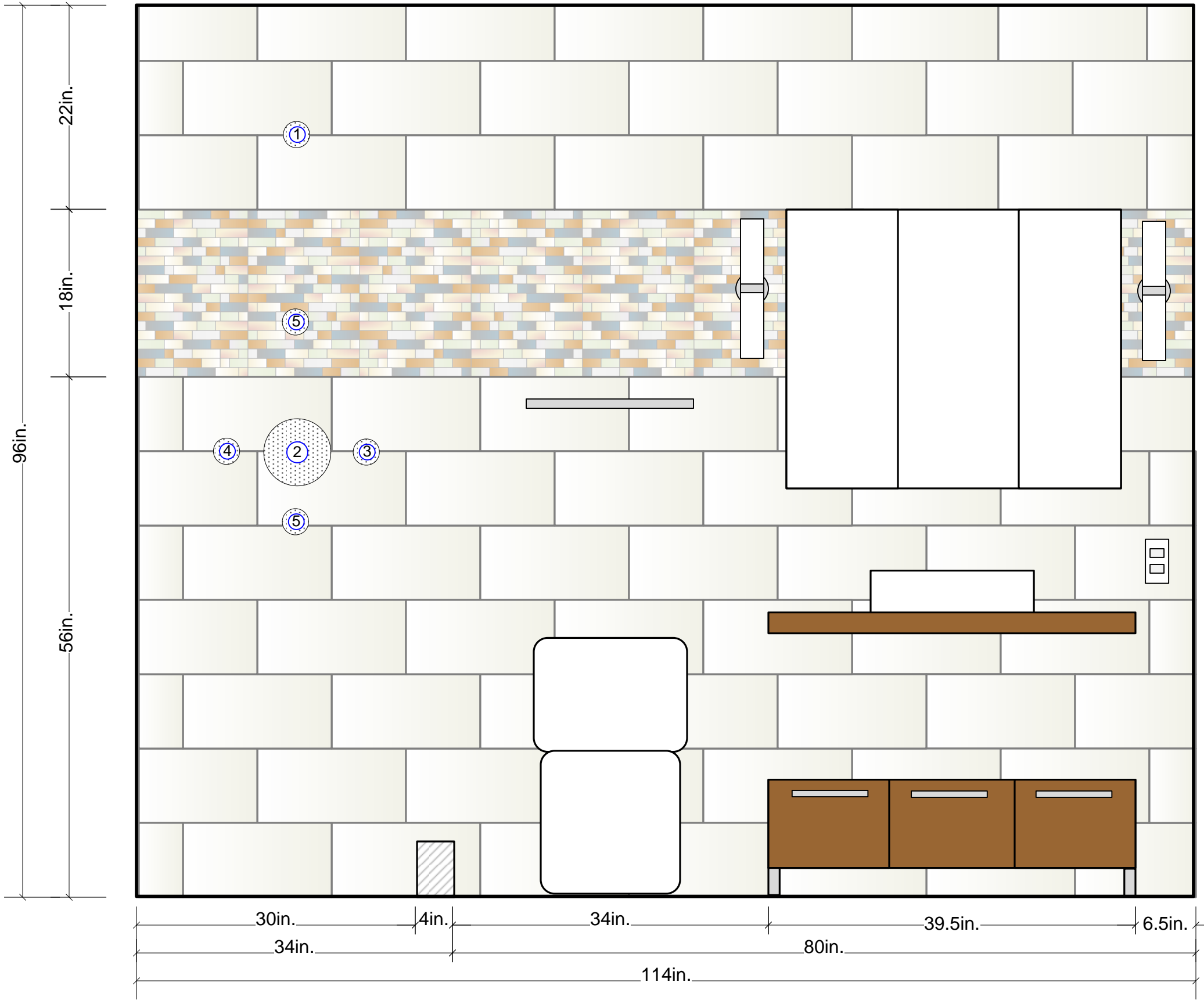
Design Drawings by
Beth Niemand
Niemand Interiors
Chicago, IL
Cell 312-498-5838

Floor Plan with Tile Bath Remodel



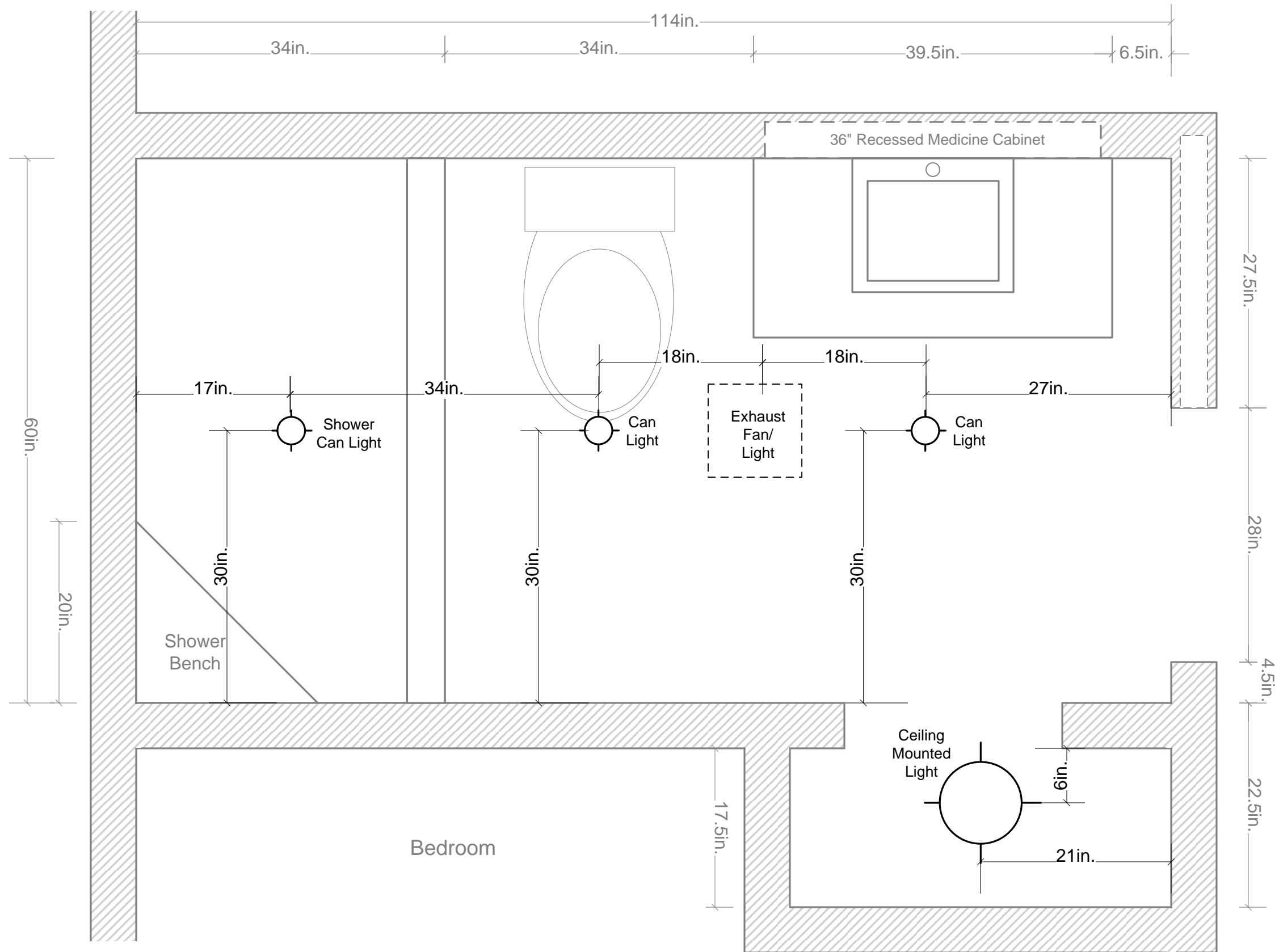
Elevation with Tile
Bath Remodel

East Elevation



Design Drawings by
Beth Niemand
Niemand Interiors
Chicago, IL
Cell 312-498-5838

Electrical Plan Bath Remodel



Design Drawings by
Beth Niemand
Niemand Interiors
Chicago, IL
Cell 312-498-5838